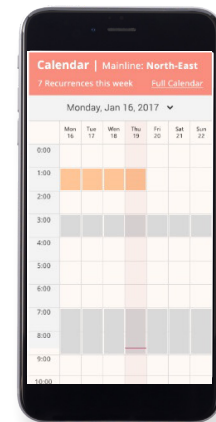
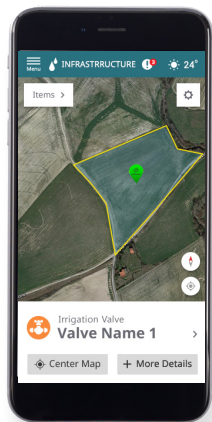


## From the palm of your hand



Build and manage irrigation and fertigation programs easily – just like using an Outlook calendar



Get a farm map overview that can be used to monitor and activate the system

# 5 Reasons

Why NetBeat™ is the Biggest Innovation in Irrigation since the Invention of Drip

- 1 All in One**  
closed-loop platform managed from your smartphone
- 2 Strong Brain Power**  
Dynamic crop models based on 50 years of experience and advanced analytics
- 3 Cloud Technology**  
Allows third party data integration, and remote access, support and updates
- 4 Simple and Intuitive**  
User friendly and customer-centric interface, at the palm of your hands from any device
- 5 Smart Irrigation for all**  
From advanced corporate farms to smallholders

Join the digital revolution at [www.netafim.com](http://www.netafim.com)



# NetBeat™

The first irrigation system with a brain



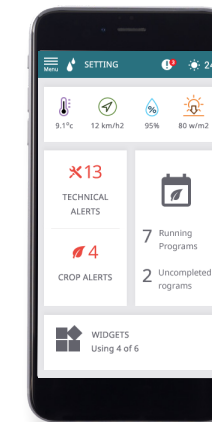
Monitor



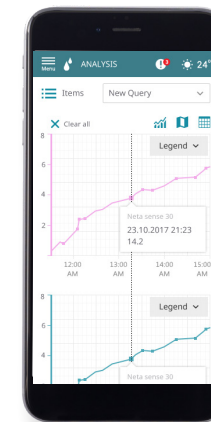
Control

Analyze

## Monitor, Analyze, Control.



One easy-to-use dashboard with all the data you need in a smart and simple interface



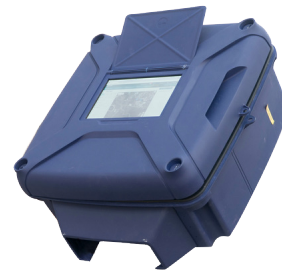
Monitor field sensors and have them alert you according to thresholds



## NetMCU™ Powered by NetBeat™

NetBeat's Main Control Unit manages all field activities and is packed with multiple features that give farmers full command of their field.

- Fits all farm sizes and complexities
- Over-the-air updates and maintenance
- Wi-Fi, Bluetooth, Cellular, LoRa radio
- Controls multiple main-lines
- Military grade hardware



Control

## NetRTU™ Powered by NetBeat™

With easy installation, slick design and powerful connectivity, NetBeat's Remote Terminal Unit Transmits field data and activates system components.

- Open unit for any input (sensors) or any output (valves, pumps, dosing)
- Up to 3 years activation on one battery
- Up to 10 km range



Control

## Dosing Systems for Open Fields and Orchards



FertiOne  
for Open fields & Orchards



Netaflex 3G  
for Greenhouse Soil & Soilless

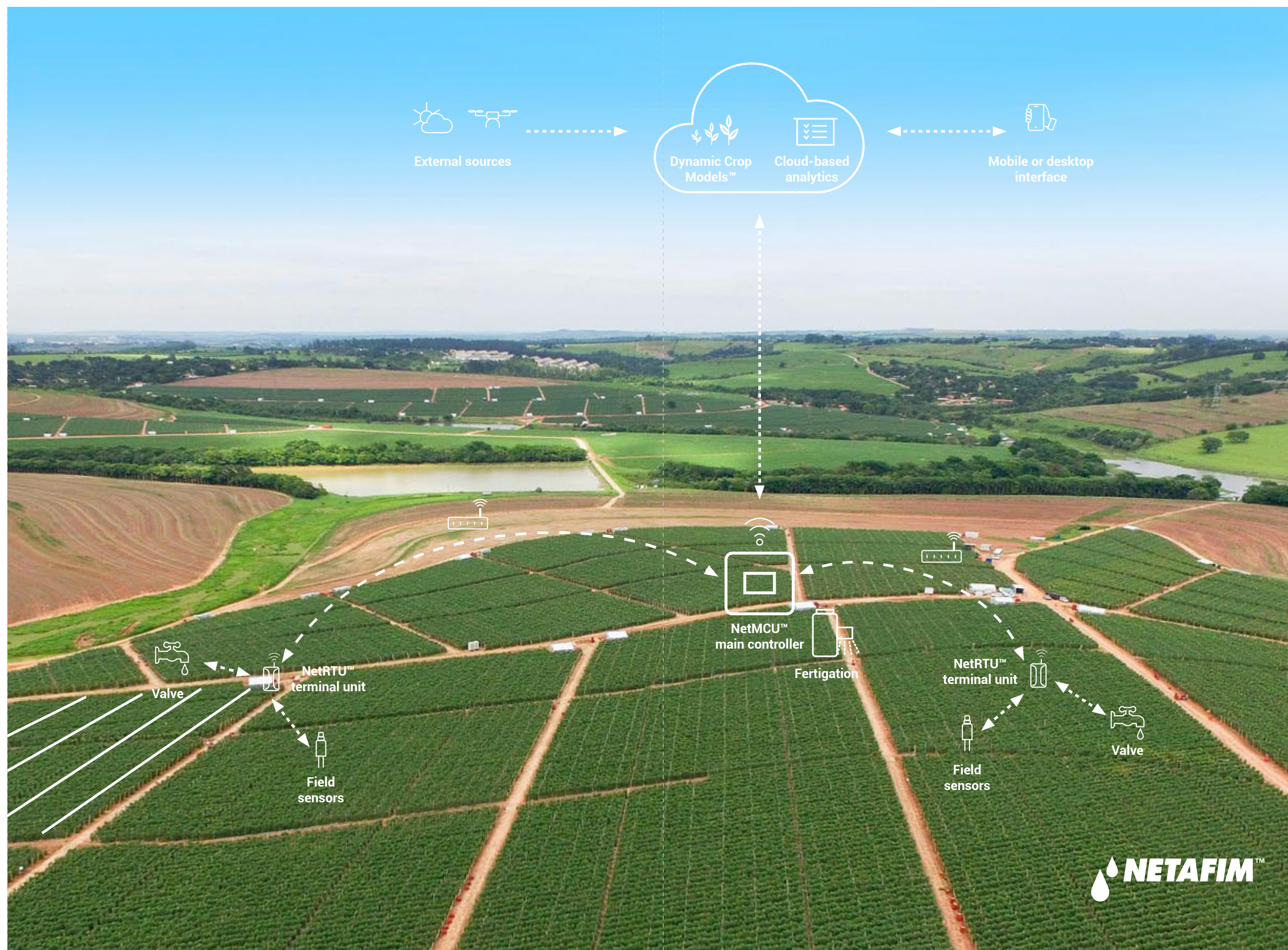


Fertikit 3G  
for Open fields, Orchards & Net houses



Netajet 4G  
for Greenhouse Soil & Soilless

Control



## NetBeat™ Cloud Software

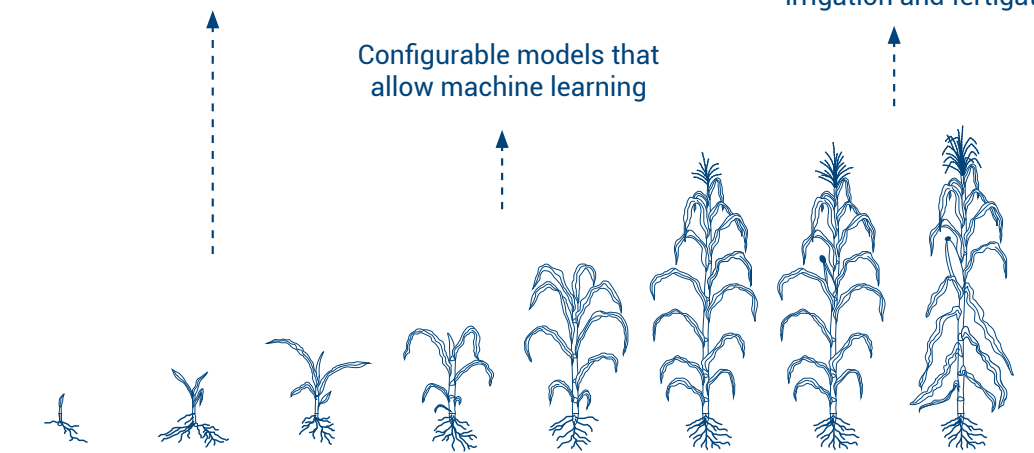
NetBeat™ cloud software is hosted on Amazon Web Services (AWS) giving farmers not only the power to manage their activities from their smartphone but also unprecedented access to a super computing brain with multiple benefits.

### NetBeat™ Dynamic Crop Models

NetBeat™ crop-driven decision support system is a game-changing innovation that transforms the way growers are managing their irrigation plans. Based on 50 years of agricultural and hydraulic knowledge, NetBeat™ Dynamic Crop Models optimize farmers' strategy allowing them to increase yields while reducing inputs.

Follows the crop stage according to climate data, sensors, and farmer inputs

Gives clear recommendations for irrigation and fertigation



Analyze

## Sensors Powered by NetBeat™

Netafim's super-precise sensors and monitoring tools help farmers get closer to their crops by collecting accurate and real-time data from the field. By monitoring all soil, weather, crop, environmental and hydraulic conditions, NetBeat™ powered sensors provide farmers with a full picture of their crops and environmental conditions, ensuring they never miss a beat. NetBeat™ is an open platform ready to integrate any sensor.



Netacap profile probe



Irrrometer Tensiometer



Delta T - SM 150T



NetBeat™ weather station

Monitor